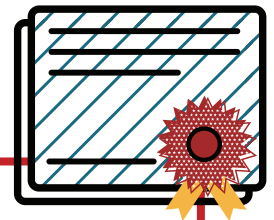
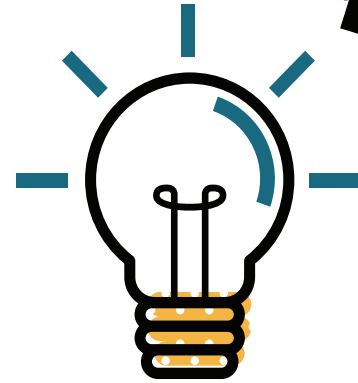
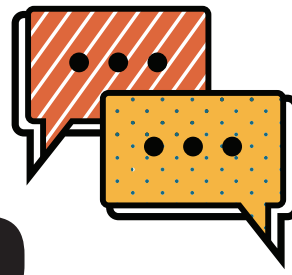


# QUARTERLY NEWSLETTER

Kansas Center for Career and Technical Education



## Mentoring

In the state of Kansas, new CTE teacher retention is a challenge (*don't we know it!*). We have found that when new teachers receive support from a veteran teacher in the same CTE area, with the same student organizations and extracurricular activities, retention is achieved. Last year (FY20) we were able to support 68 mentees with the help of 52 mentors! To find out more, click [here](#).

## Coursework

The Technical Teacher Education program is now 100% online! Courses are offered in three formats: online, hybrid-zoom, and by appointment. **Online** courses are facilitated through Canvas with no required synchronous meetings. **Hybrid-Zoom** is facilitated in Canvas with required synchronous zoom meetings on select Tuesday or Thursday evenings from 5-8 pm. **By appointment** courses are facilitated with student's advisors. Removing hurdles or barriers (*and costs*) to CTE teacher professional development is very important to us! [Contact us](#) for more information.

## Workshops

The 2020 Fall CTE Workshops normally held at PSU will be presented in a virtual format this year for the following areas: Interior Design, Health Science, Graphics, Construction Safety, and Wood Technology. All sessions will be held November 5 - 6. Watch the [KCCTE Website](#) for registration information and a finalized schedule. Be watching also for more virtual workshop opportunities that will be available soon!

## Resources

We are seeking **your** help to help **others!** Do you have lesson plans, student activities, rubrics, or syllabi that you want to share with others in your content area? Or a favorite "go-to" website that you utilize in the classroom? **Share** your resources with others as we all facilitate and balance virtual and in-person teaching! Go to: [library.kccte.pittstate.edu](http://library.kccte.pittstate.edu) to upload today!



**KANSAS CENTER FOR CAREER AND TECHNICAL EDUCATION**

kccte.pittstate.edu | 620-235-4261 | Pittsburg State University